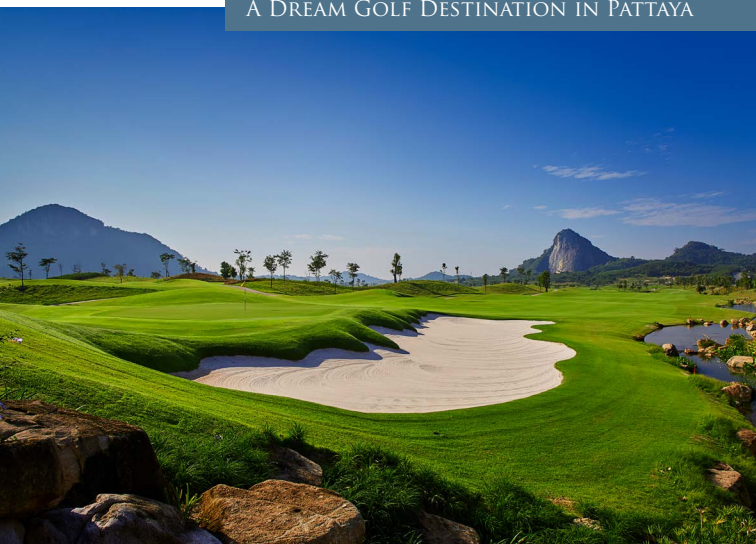




**CHEE CHAN**  
GOLF RESORT

# **YARDAGE GUIDE BOOK**

A DREAM GOLF DESTINATION IN PATTAYA





## **ABOUT**

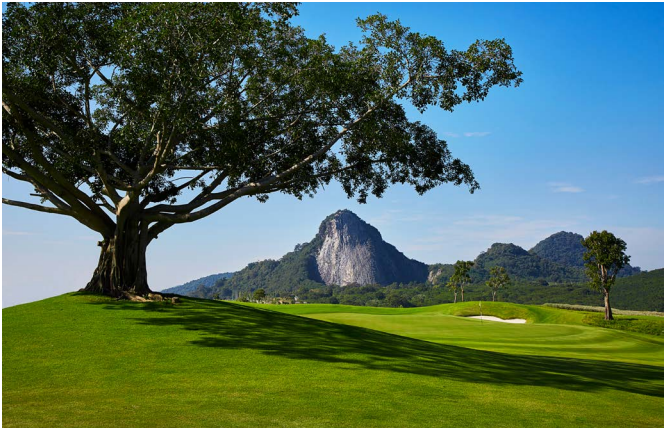
---

### **Chee Chan Golf Resort**

A DREAM GOLF DESTINATION IN PATTAYA

**C**hee Chan Golf Resort provides an 18-hole championship course designed by David Dale of Golfplan as the Golf Course Architect, and landscape designed by GCH. The course is situated on 580 rai (229 acres) in a stunning location next to the famed Chee Chan Mountain, well known for its gold engraving of the Lord Buddha, Phra Phuttha Maha Wachira Uttamopat Satsada. Considered the world's largest Lord Buddha engraving, it can be seen from every hole on the golf course. Chee Chan Golf Resort also provides spectacular views of the Pattaya skyline, with the Gulf of Thailand coast visible in the distance.

The club provides 5-star services to international standards, thus delivering our vision: "Chee Chan Golf Resort, the dream Golf Destination in Pattaya". The stunning clubhouse is beautifully designed and is equipped with a wide variety of amenities and world-class services, including well-appointed locker rooms, a pro-shop, and different types of local and international cuisine in our signature restaurant, "The View".



# INSPIRATION

---

**I**nspired by our CEO, Narit Chia-Apar, with over 30 years of experience and a deep passion for golf, Chee Chan Golf Resort is focused on being a sustainable and environmentally friendly while providing guests with a truly world class experience in a uniquely spectacular setting.



# THE COURSE

## SUMMARY



**G**iving players a walkthrough of each hole is only one way to get them ready for the coming challenges. The fun lies in the actual experience of playing each hole your own unique way, experiencing emotions when put in situations you will learn from, then laughing about with your friends after the game. At Chee Chan Golf Resort, our aim is that our guests will return home with their experience and stories and share them with others. We're confident that our golfing facilities will give you great pleasure and the longing to return for the chance to master the course once again.



# TOTAL

BLACK	BLUE	WHITE	RED
7,345	6,881	6,527	5,406



NORTH



GREEN  
LAYOUT

HOLE

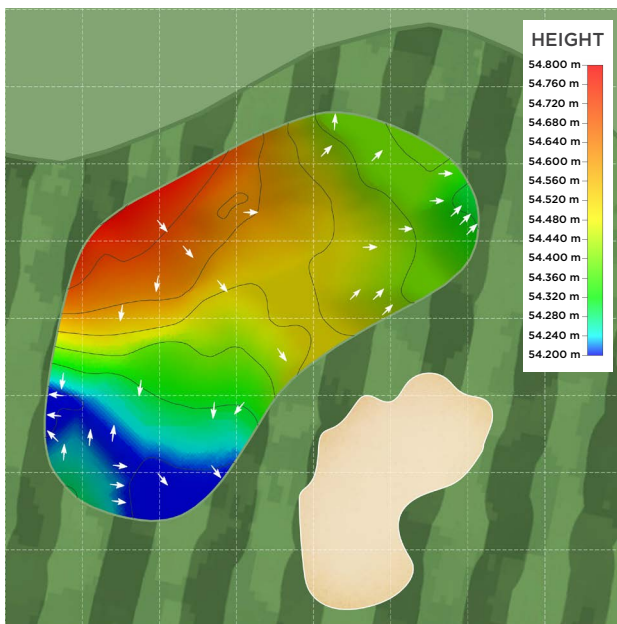
1

PAR 4



## GREEN SIZE

WIDTH : 31.2 YARDS | DEPTH : 29.0 YARDS



0 1 5 10 Meters

Scale



# HOLE

# 1

## PAR 4

HCP 17

■ 280	■ 335
■ 265	■ 320
□ 241	□ 296
■ 171	■ 216

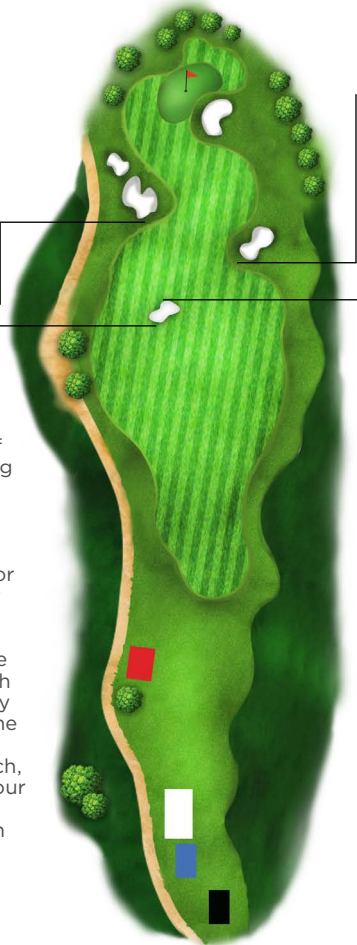
**F**rom the clubhouse, players are immediately greeted by a stunning view of the Buddha engraving on Chee Chan mountain. This Par 4 plays straight with a wide-open fairway, providing a chance for all players to rip their first tee shots. The green is guarded by bunkers which can be very tricky, along with the slopes and variety of pin placements. The key to mastering this hole is in the approach, playing smart with your second shot, and finding your touch on an undulating green.

### YARDAGE

BLACK	BLUE	WHITE	RED
398	383	360	280

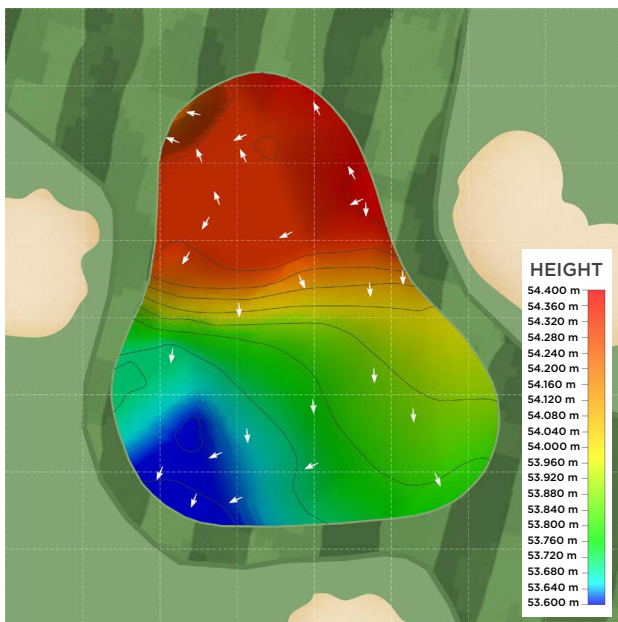
■ 314
■ 300
□ 277
■ 200

■ 294
■ 279
□ 255
■ 176



**GREEN SIZE**

WIDTH : 27.9 YARDS | DEPTH : 32.3 YARDS



0 1 5 10 Meters

Scale

# HOLE

# 2

PAR 5

HCP 7

**T**his long Par 5 presents a challenge for players of all levels, with the entire left side being occupied by a lake. Tee shots must be played with caution. Some longer hitters can certainly reach the green in two, but those who fall short may pay the price by several green-side bunkers. The green itself also presents a challenge by sloping its way down toward water on the left side. Players must position their approach wisely to set up an easy two-putt for par.

312  
279  
258  
191

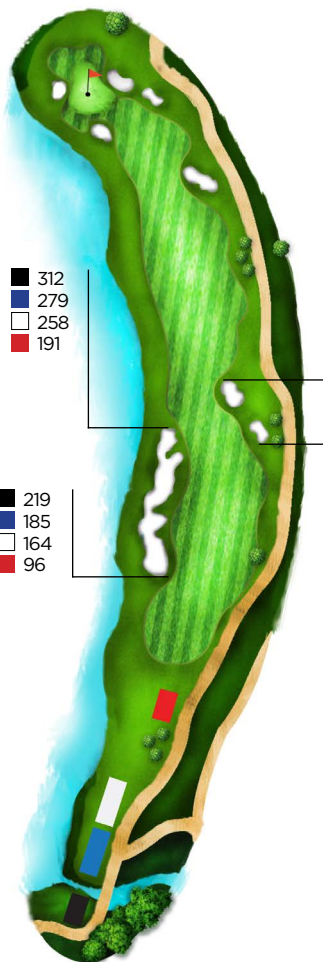
219  
185  
164  
96

335  
301  
280  
209

319  
286  
264  
191

## YARDAGE

BLACK	BLUE	WHITE	RED
555	518	497	422



GREEN  
LAYOUT

HOLE

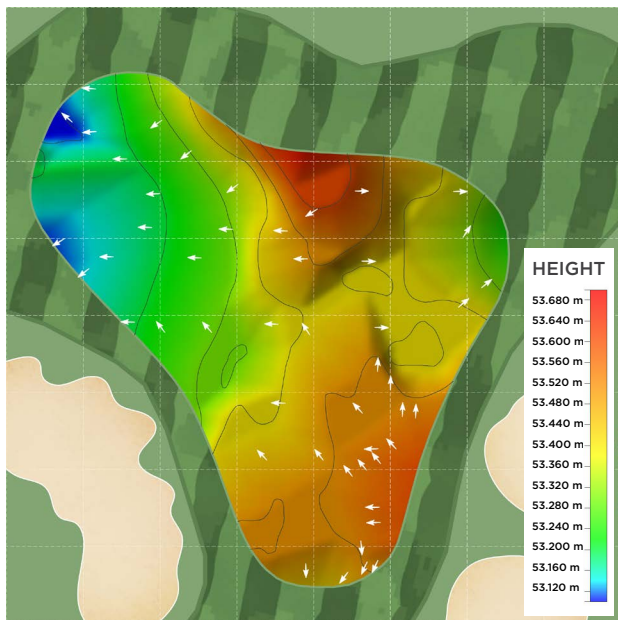
3

PAR 3



## GREEN SIZE

WIDTH : 33.6 YARDS | DEPTH : 36.1 YARDS



0 1 5 10 Meters

Scale

# HOLE

# 3

## PAR 3

### HCP 15

■ 183  
 ■ 170  
 ■ 143  
 ■ 118

■ 163  
 ■ 150  
 ■ 123  
 ■ 97

■ 187  
 ■ 173  
 ■ 146  
 ■ 118

■ 174  
 ■ 160  
 ■ 138  
 ■ 105

■ 160  
 ■ 146  
 ■ 119  
 ■ 91

**T**he first Par 3 has challenges with a left-side water trap, and two bunkers right of the green, with one guarding the front approach. Missing the green right will give players lots to think about as the lake behind the green will give you a good scare as you pitch toward the pin. Breathtaking view of the clubhouse will be in full display all the while.

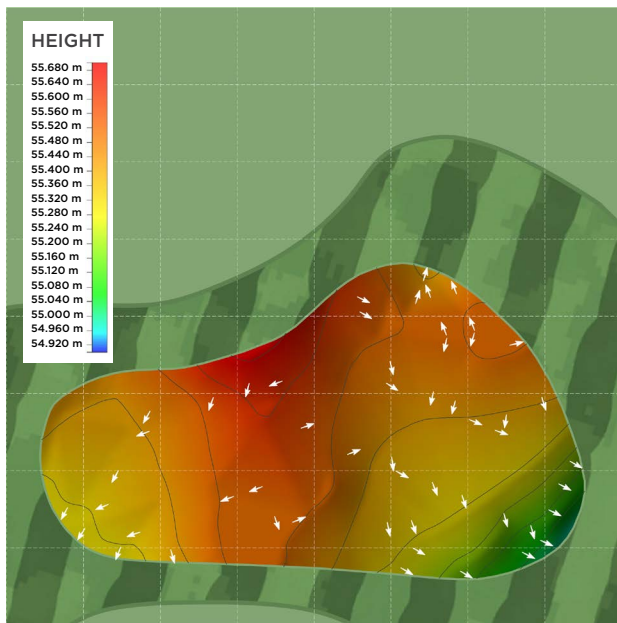
### YARDAGE

BLACK	BLUE	WHITE	RED
189	175	148	122



**GREEN SIZE**

WIDTH : 38.8 YARDS | DEPTH : 22.4 YARDS



0 1 5 10 Meters

Scale

# HOLE

# 4

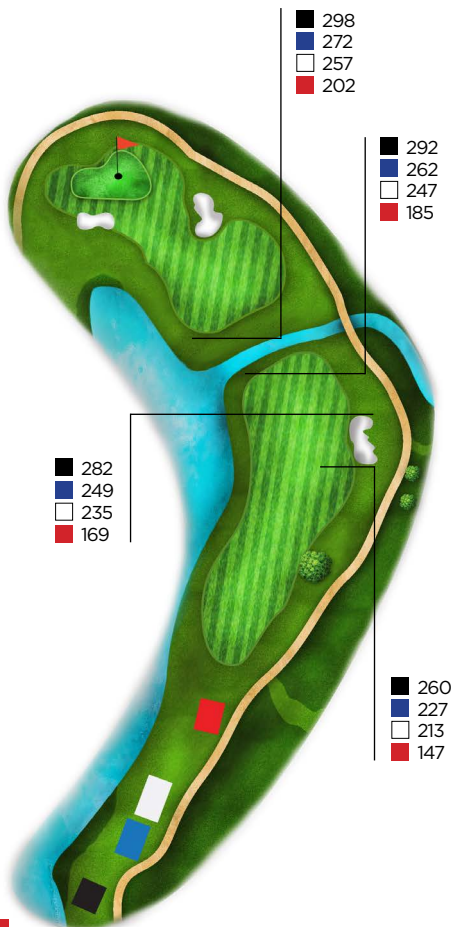
## PAR 4

HCP 11

**F**rom the tee, a strong dogleg left hole will make you ponder how you want to play the hole. A lake is located left, cutting across at about 230 yards (from the Blue tee). Laying up and leaving a proper iron shot for your approach is key to getting on in regulation and securing your par. Beware of a looming bunker just short of the green, and be mesmerized by the view of the clubhouse in the background.

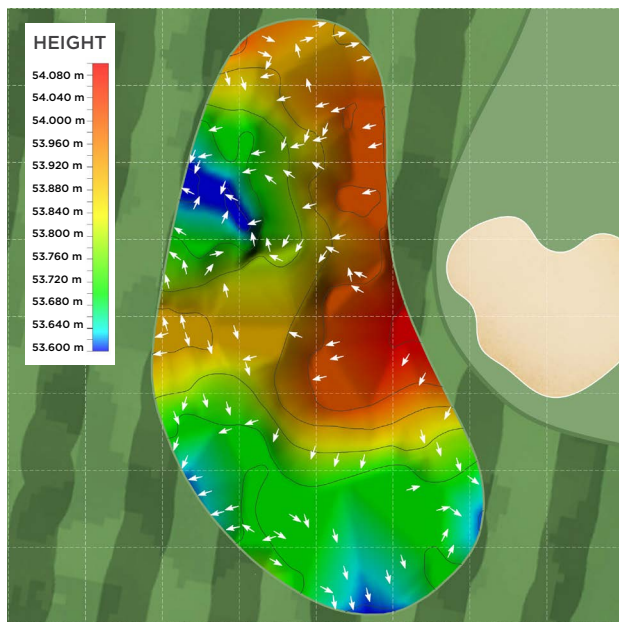
### YARDAGE

BLACK	BLUE	WHITE	RED
424	394	379	323



**GREEN SIZE**

WIDTH : 24.1 YARDS | DEPTH : 41.6 YARDS



0 1 5 10 Meters

Scale



# HOLE

# 5

## PAR 4

HCP 3

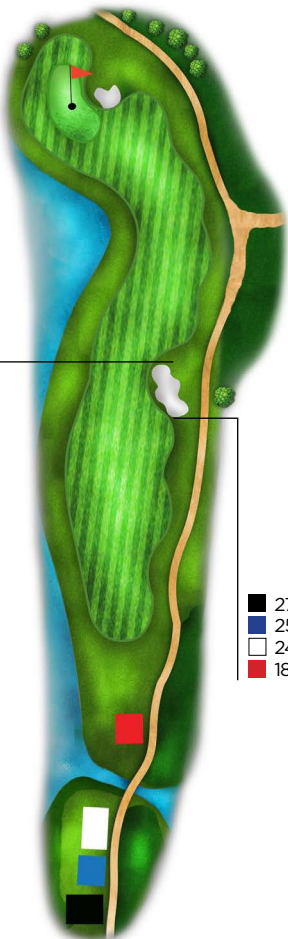
■	306
■	286
□	270
■	210

As you stand on a tee box, the Chee Chan Buddha mountain accompanies you on the left, as does the water. Placing your tee shot right center of the fairway is ideal for the approach to the narrow green. An intimidating bunker mid right of the green may pose a threat for some players as avoiding it might lead to overshooting your approach to the left and ending up in the lake. Strike your approach pure and precise to pick up another par.

■	279
■	259
□	243
■	182

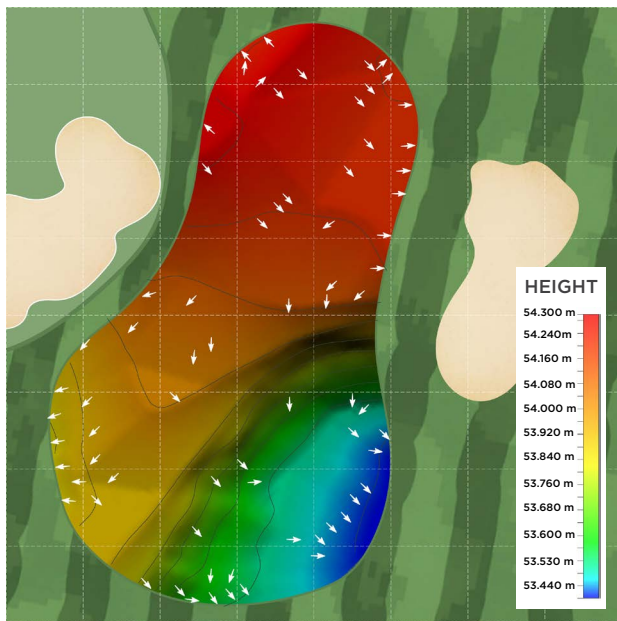
### YARDAGE

BLACK	BLUE	WHITE	RED
448	429	415	354



**GREEN SIZE**

WIDTH : 25.7 YARDS | DEPTH : 41.6 YARDS



# HOLE

# 6

## PAR 3

HCP 13

■	204
■	185
□	167
■	181

■	196
■	177
□	160
■	128

■	182
■	162
□	146
■	113

**T**his Par 3 is spectacular in its own way, with water cutting diagonally and bunkers spaced out on both sides, front and back. Any approach short and right of the green is likely to end up near the lake's edge. So, pick the right club and play your tee shot left and long to save yourself from unnecessary hassles.

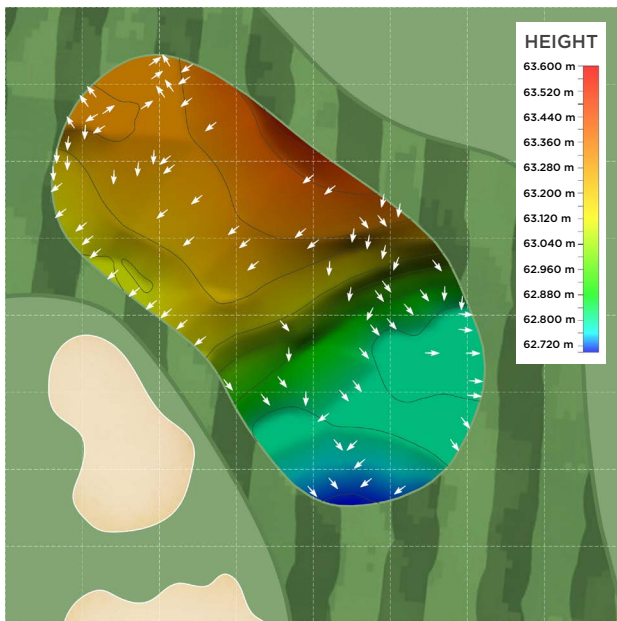
### YARDAGE

BLACK	BLUE	WHITE	RED
202	182	165	131



**GREEN SIZE**

WIDTH : 31.2 YARDS | DEPTH : 32.3 YARDS



0 1 5 10 Meters

Scale

# HOLE

# 7

PAR 4

HCP 5

**F**rom the tee, you see a temple on the mountain top in the distance, and as you turn around, Chee Chan Buddha Mountain seems closer to you than ever. It's ideal to place your tee shot in the middle of the fairway to allow for an easy second shot toward the pin. Awaiting your short approach is a large deep bunker located mid-left of the putting surface. Missing it right or going long left provides better chances to still salvage a par.

## YARDAGE

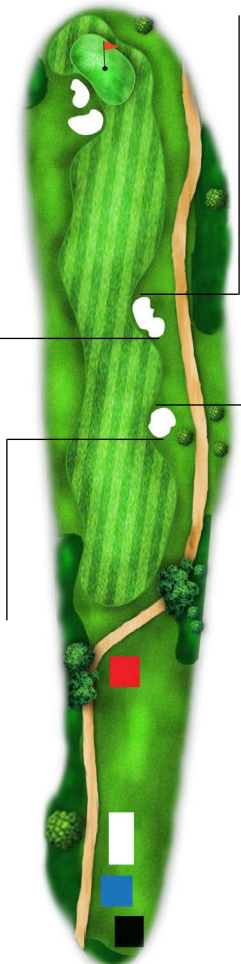
BLACK	BLUE	WHITE	RED
450	427	401	324

309
286
262
185

257
234
210
134

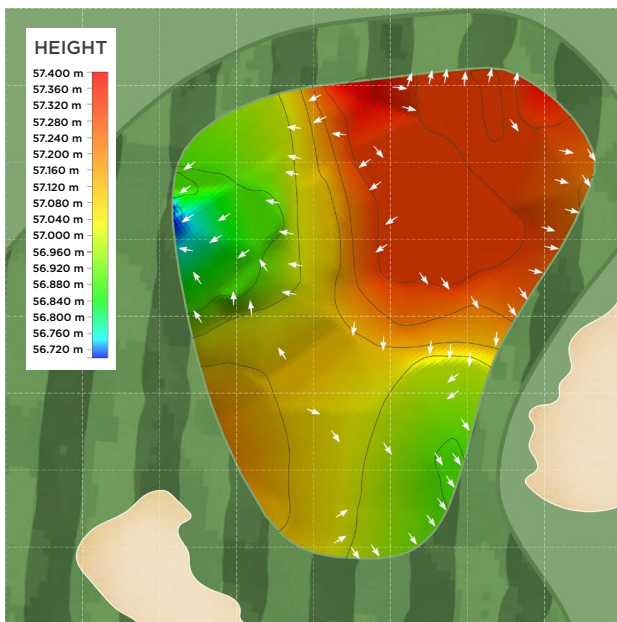
329
306
282
205

272
250
226
149



**GREEN SIZE**

WIDTH : 30.6 YARDS | DEPTH : 35.0 YARDS



0 1 5 10 Meters

Scale

# HOLE

# 8

## PAR 4

### HCP 1

As you are ready to tee off, the Buddha engraving on Chee Chan Mountain is displayed in full view for the entire duration of playing the hole. With the cart path running along the left side and a series of bunkers lined up nicely on the right, the ideal for landing your tee shot is down the right side of the fairway near the sand traps. A narrow approach must be anticipated, and left side of green is favored over the right as it allows a greater variety of options for your short game. Making a par on this hole is certainly an achievement as it normally plays into the prevailing wind.

### YARDAGE

BLACK	BLUE	WHITE	RED
485	450	433	357

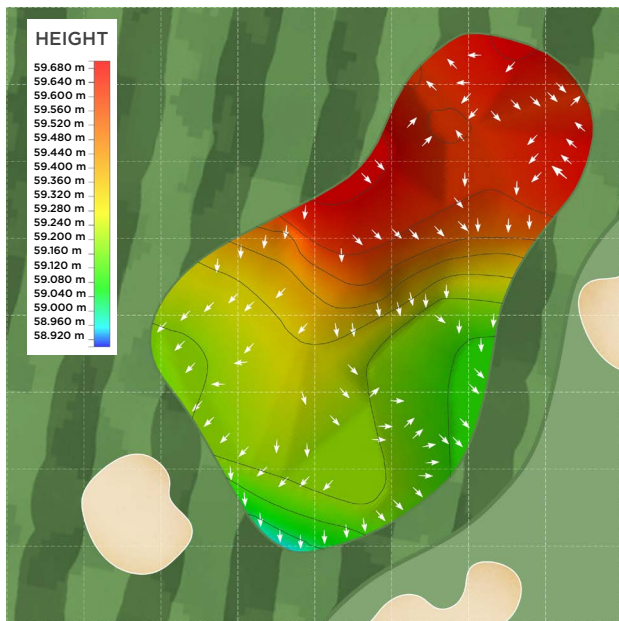


■	300
■	266
□	249
■	177

■	289
■	255
□	238
■	167

**GREEN SIZE**

WIDTH : 31.7 YARDS | DEPTH : 37.2 YARDS



0 1 5 10  
Meters

Scale



# HOLE 9 PAR 5

HCP 9

**T**his closing Par 5 of the front nine has the backdrop of the clubhouse and the beautiful national park. With Chee Chan Mountain on your right side and Chee On Mountain staring back at you from the front, the hole plays straight away. You'll need a strong second shot to successfully handle a strategically placed water hazard. Play your second shot up the left side, allowing an easy and stress-free third shot toward the pin. Finding the correct level of the green is your best chance for a birdie or attempt to take your two putts for a par.

## YARDAGE

BLACK	BLUE	WHITE	RED
577	563	539	446

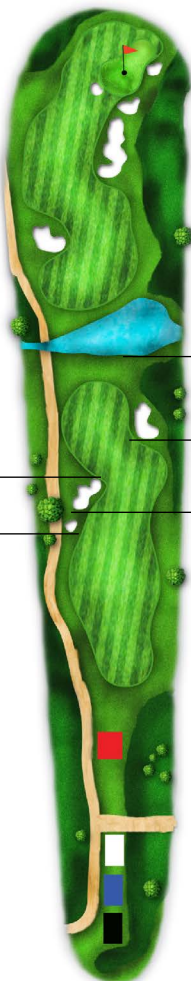
292
278
254
166

259
245
221
133

365
350
326
238

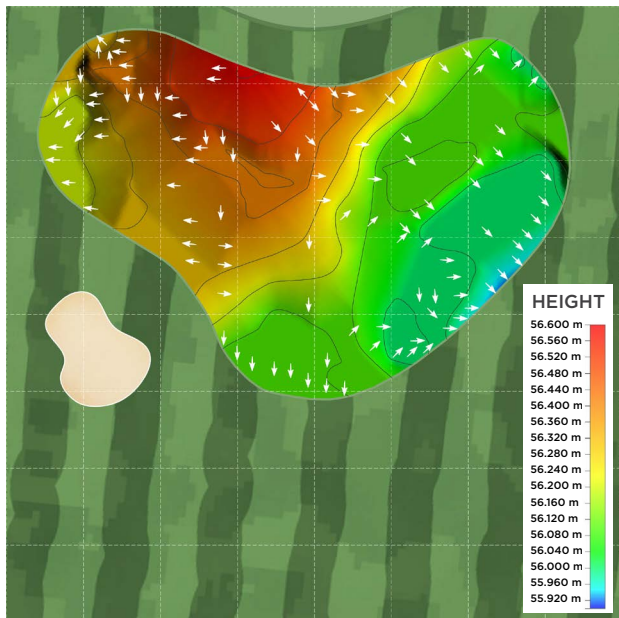
318
304
281
194

272
258
234
146



**GREEN SIZE**

WIDTH : 38.3 YARDS | DEPTH : 26.8 YARDS



0 1 5 10 Meters

Scale

# HOLE 10 PAR 4

HCP 14

307  
268  
249  
191

323  
287  
267  
212

285  
246  
227  
169

291  
252  
233  
175

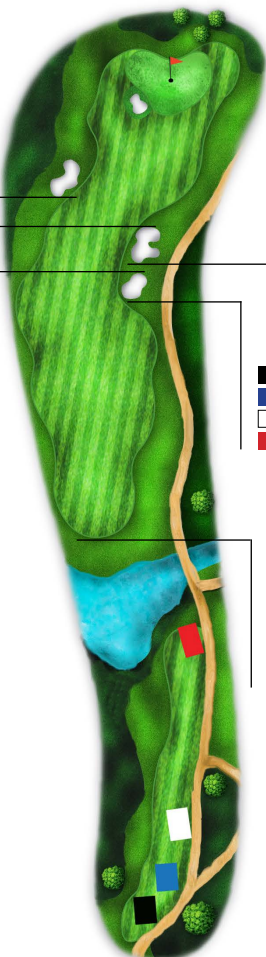
274  
236  
217  
160

157  
122  
103  
53

On this opening hole to the back nine, a wide-open fairway greets you with a water hazard right in front of the tee boxes just for your viewing pleasure. A group of bunkers are placed to the right, which can easily be put out of play with a good long drive. A short uphill chipping challenge awaits as you try to get it close to the pin in two to score a par or better.

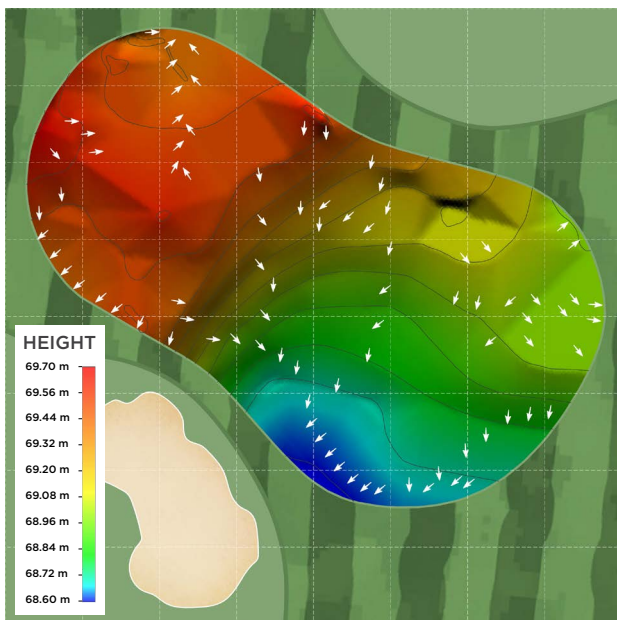
## YARDAGE

BLACK	BLUE	WHITE	RED
380	344	324	263



**GREEN SIZE**

WIDTH : 41.6 YARDS | DEPTH : 34.5 YARDS



0 1 5 10 Meters

Scale

# HOLE

# 11

## PAR 4

### HCP 6

285	262
249	226
230	208
176	153

285
249
230
176

317
283
264
209

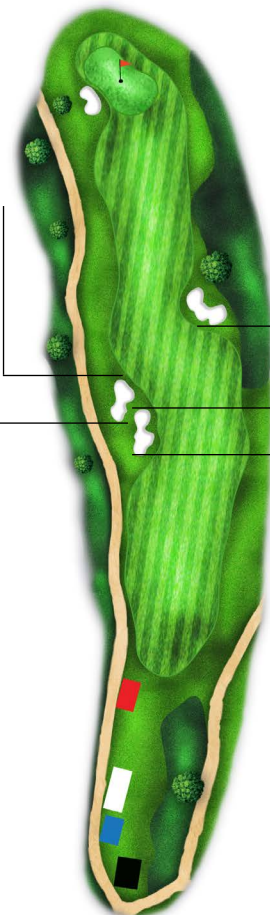
268
232
214
159

242
206
188
133

**T**his uphill Par 4 presents a significant elevation change to the landing area with bunkers on the left and right. Landing your tee shot just right center of the fairway is best for your approach angle to an elevated green 6 meters above the landing area. Enjoy a breathtaking view of the Buddha engraving as you pick up your par and look back toward the hole.

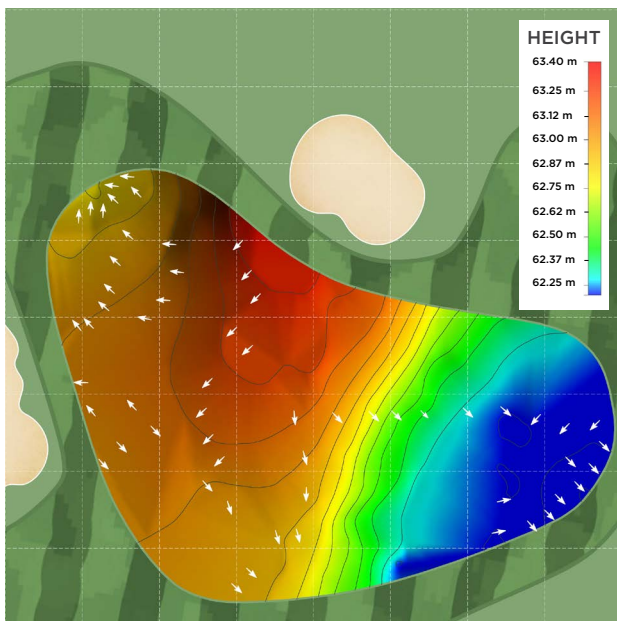
## YARDAGE

BLACK	BLUE	WHITE	RED
459	424	406	348



**GREEN SIZE**

WIDTH : 41.0 YARDS | DEPTH : 30.6 YARDS



0 1 5 10 Meters

Scale

# HOLE 12 PAR 3

HCP 18

■ 170  
■ 153  
□ 147  
■ 103

■ 155  
■ 139  
□ 133  
■ 89

■ 174  
■ 158  
□ 144  
■ 113

**O**n this seemingly simple Par 3, you will find yourself intimidated by the water coming into play on the right-hand side. Aiming toward the center of the green is best for a routine par. Getting trapped in the left green-side bunker will demand a menacing recovery shot, which is a very difficult up and down.

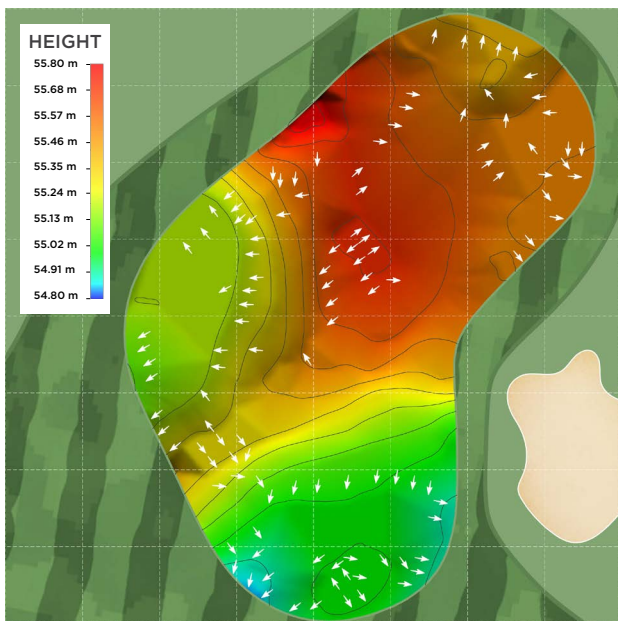
## YARDAGE

BLACK	BLUE	WHITE	RED
161	145	132	99



**GREEN SIZE**

WIDTH : 33.4 YARDS | DEPTH : 43.2 YARDS



0 1 5 10  
Meters

Scale



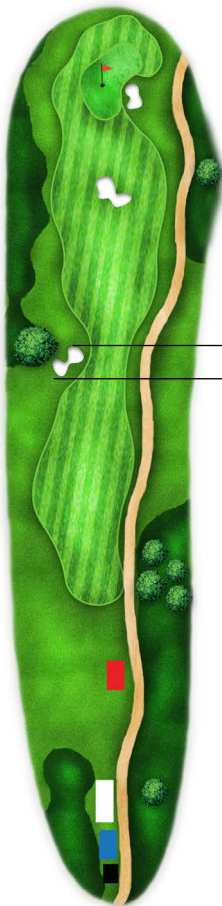
# HOLE

# 13

PAR 4

HCP 2

**P**laying this downhill Par 4, again, with a front view of the Buddha engraving, a bunker is placed long left of the fairway, challenging only the longest of hitters. There is a change in elevation in the fairway which must be taken into consideration in positioning your tee shot. Placing your ball in the middle of the fairway is favorable as it leaves an open approach toward the green while keeping in mind the hidden bunker in the center, 25 meters short of the putting surface. Greenside areas are wide and generous, presenting a number of short game options.



315  
282  
265  
205

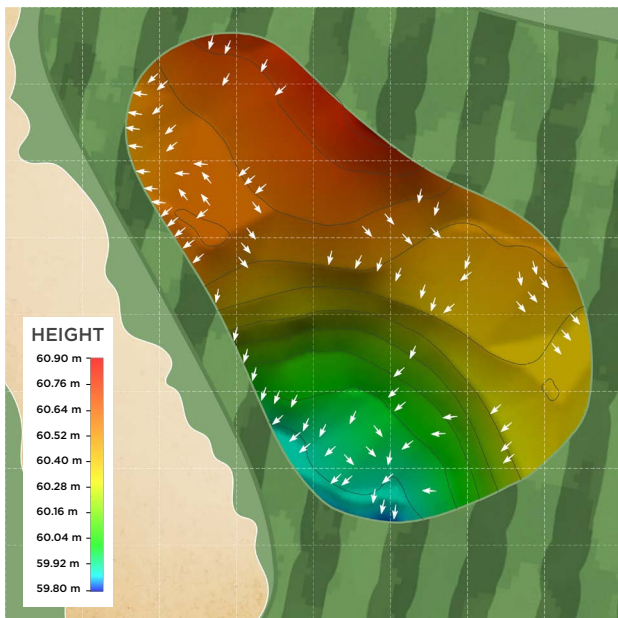
299  
266  
249  
190

## YARDAGE

BLACK	BLUE	WHITE	RED
472	438	420	360

**GREEN SIZE**

WIDTH : 33.4 YARDS | DEPTH : 35.5 YARDS



0 1 5 10 Meters

Scale

# HOLE

# 14

PAR 5

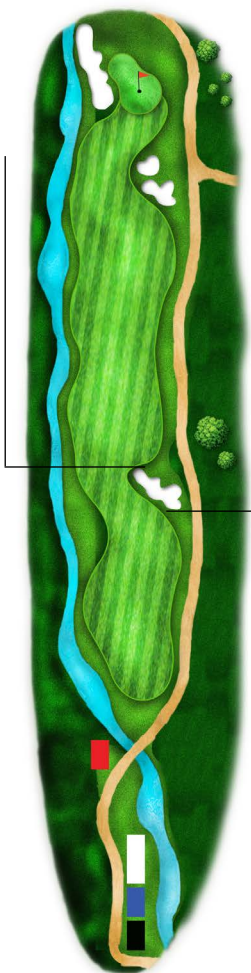
HCP 12

■	314
■	282
■	266
■	191

**T**his Par 5 hole presents not only beauty, but also challenges throughout its entire length. A stream cuts diagonally in front of the tee boxes and runs along the left side, providing much viewing pleasure to the players, while a bunker is placed on the right side of the fairway to welcome golf balls from longer hitters. Leaving your approach just short of 100 yards to the green is wise, though some bolder players may attempt to carry the bunkers short right of the green and be rewarded with an easy pitch onto a putting surface. Players must also beware of a large ball collection bunker on the entire left edge of the green. Plan your shots well and be rewarded with an impressive par.

## YARDAGE

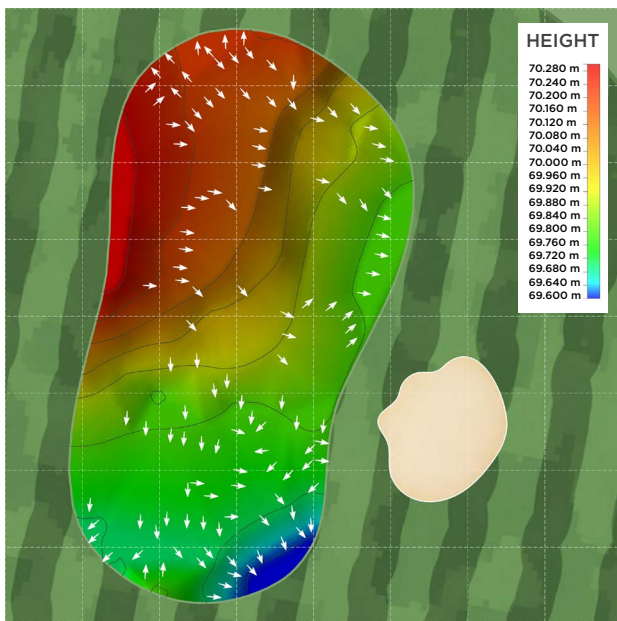
BLACK	BLUE	WHITE	RED
585	552	536	460



■	288
■	255
■	240
■	168

**GREEN SIZE**

WIDTH : 25.2 YARDS | DEPTH : 40.5 YARDS



# HOLE 15 PAR 4

## HCP 16

■ 263  
 ■ 251  
 □ 218  
 ■ 149

■ 260  
 ■ 245  
 □ 214  
 ■ 146

■ 244  
 ■ 226  
 □ 198  
 ■ 138

■ 287  
 ■ 274  
 □ 242  
 ■ 172

■ 281  
 ■ 270  
 □ 237  
 ■ 167

■ 324  
 ■ 310  
 □ 278  
 ■ 209

■ 312  
 ■ 296  
 □ 266  
 ■ 199

■ 293  
 ■ 280  
 □ 248  
 ■ 179

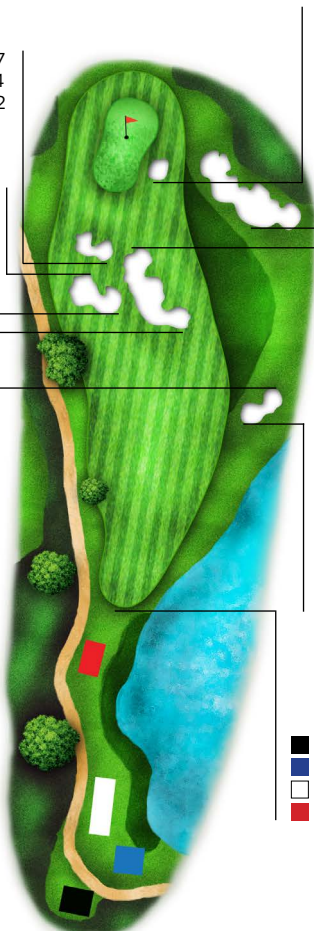
■ 226  
 ■ 209  
 □ 181  
 ■ 119

■ 139  
 ■ 124  
 □ 93  
 ■ -

**A**t this drivable, risk and reward Par 4, a 300 yard carry can get you very close to the putting green. For more conservative players, a 220 yard layup will set you up well for a convenient pitch onto the putting surface. Having numerous ways to play this hole probably makes it one of the most favorite holes on the course.

## YARDAGE

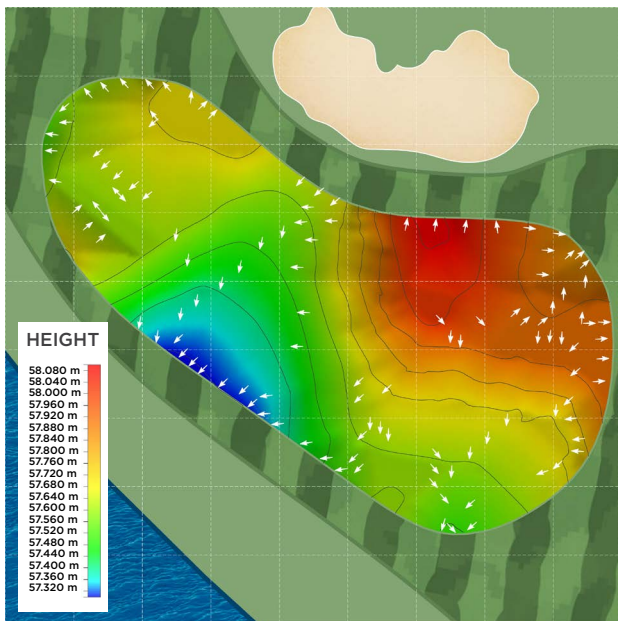
BLACK	BLUE	WHITE	RED
340	327	295	225





## GREEN SIZE

WIDTH : 45.4 YARDS | DEPTH : 36.6 YARDS



# HOLE 16 PAR 5

HCP 8

**T**his double dogleg is a downhill Par 5, which will undoubtedly tempt all players to aim toward the right-side bunker, hoping to carry it and be rewarded another 20-30 yard roll. Providing that you have claimed such position, there are more options for your second shot. While if you were not so successful with your drive, your ideal second shot should leave a good full swing approach to reach the green. Trying to get on in two is achievable only with a clean and precise hit, as it must stay away from water on the left and a bunker on the right of the green.

## YARDAGE

BLACK	BLUE	WHITE	RED
578	546	529	447

429
398
381
303

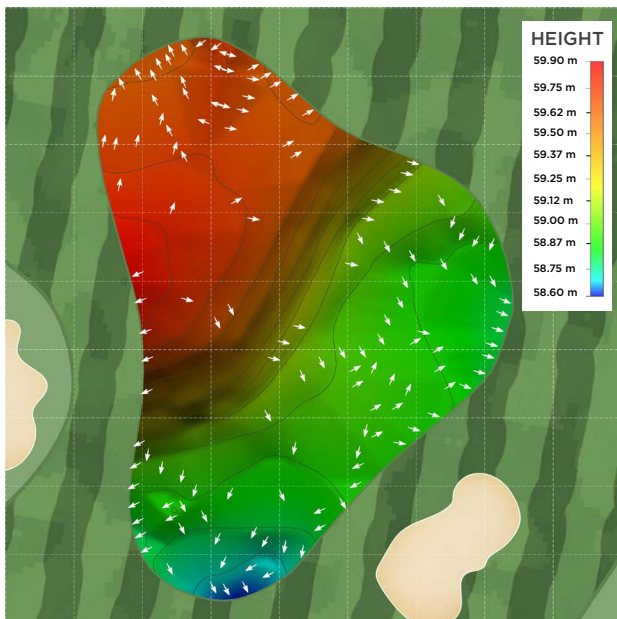
289
258
240
165

271
240
220
146



**GREEN SIZE**

WIDTH : 33.4 YARDS | DEPTH : 45.4 YARDS

0 1 5 10  
Meters

Scale



# HOLE 17 PAR 3

HCP 10

216  
194  
178  
133

203  
181  
165  
120

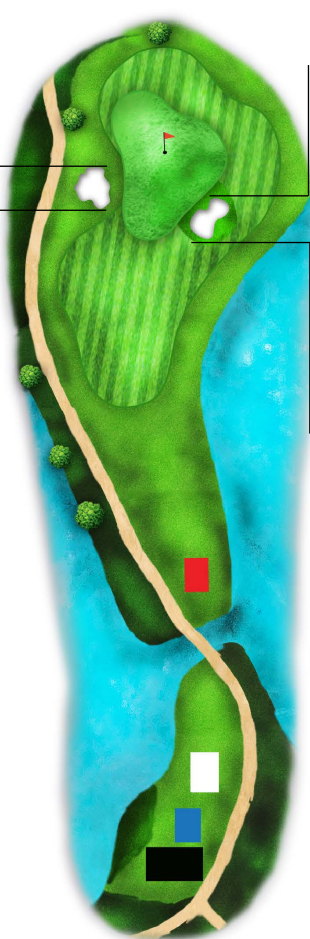
204  
178  
162  
117

190  
165  
149  
103

At the last Par 3 of the course, you are in for a treat. The tees are placed along the lake and the fairway is narrow, as if you were on the end of a peninsula playing inland. The green is protected by water on the right and bunkers on both sides. Missing it into the right bunker is however better than on the left, as you'll be faced with a mound which requires an aggressive bunker shot to overcome. A water hazard 20 yards right of the green stands by, ready to collect any balls heading its way. So choose your club wisely and use your short game skills well to earn your par.

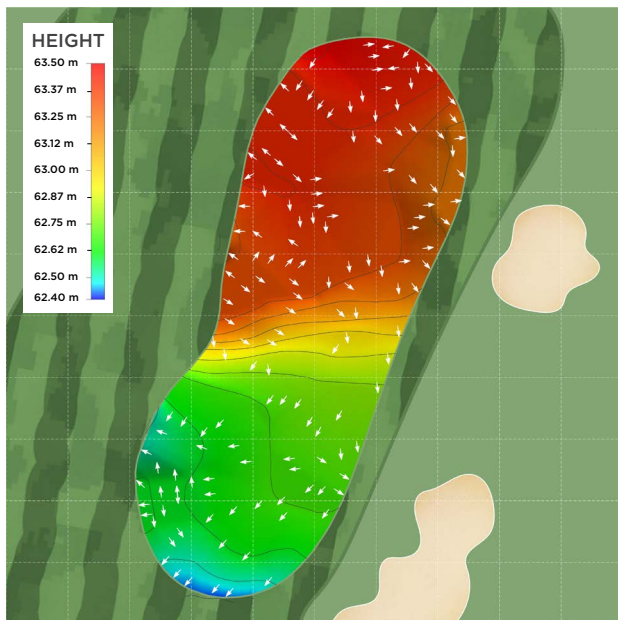
## YARDAGE

BLACK	BLUE	WHITE	RED
217	193	177	132



**GREEN SIZE**

WIDTH : 29.5 YARDS | DEPTH : 49.8 YARDS

0 1 5 10  
Meters

Scale

# HOLE 18 PAR 4

HCP 4

■ 264  
 ■ 222  
 ■ 208  
 ■ 143

■ 322  
 ■ 280  
 ■ 165  
 ■ 120

■ 346  
 ■ 306  
 ■ 287  
 ■ 226

■ 310  
 ■ 277  
 ■ 258  
 ■ 202

■ 297  
 ■ 264  
 ■ 165  
 ■ 120

■ 278  
 ■ 289  
 ■ 220  
 ■ 160

■ 228  
 ■ 199  
 ■ 179  
 ■ 124

■ 185  
 ■ 149  
 ■ 129  
 ■ 70

**T**aking in the Buddha engraving on Chee Chan Mountain from the tee, you are now ready to take on this Par 4, the final hole. The fairway is very undulating and presents two main landing areas for players to choose from. Missing your approach left will leave you a much better chance to finish your round with a nice up and down.

## YARDAGE

BLACK	BLUE	WHITE	RED
425	391	371	313





HOLE 8



HOLE 12



# **FACILITIES**

**C**hee Chan Golf Resort offers more than just great golf. Experience world class hospitality and outstanding facilities in our magnificent clubhouse, including our signature restaurant 'The View' which overlooks the award winning golf course, and provides our guests with excellent local and international cuisine.



## **RESTAURANT**

As the name suggests, “**The View**” restaurant in the clubhouse offers a magnificent panoramic view of our scenic course and the Buddha engraving on Chee Chan Mountain. Delicious local and international cuisine is provided, with a wide range of fresh and tasty food available for golfers and guests to enjoy.



## LOCKER ROOMS

The comfortable and luxurious locker rooms are equipped with full amenities, including spacious changing facilities, showers and grooming area.



## PRO SHOP

Our Pro Shop, located in the clubhouse, is where golfers book and check in their tee times. The Pro Shop also offers a large variety of high quality branded golf apparel and souvenir items with the Chee Chan Golf Resort logo.





## PGA ACADEMY

Our PGA endorsed golf academy offers students the opportunity to be coached by a qualified PGA instructor in a professional environment. Our academy programs offer a variety of teaching packages and use the very latest technology.



## SEMINAR & MEETING ROOM

The 100 seat Seminar & Clubhouse Meeting Room is well equipped with the facilities and services needed for small groups and corporate meetings. The room also offers views of the golf course.





## ON COURSE KIOSKS

Well placed around the course are refreshment kiosks for golfers to take a break and enjoy the scenery. They are located on holes 6, 14 and the half-way point next to the putting green. The In & Out snack bar next to the cart staging area is a perfect place for golfers to enjoy pre & post golf refreshments.



## DRIVING RANGE

Located next to the clubhouse, enjoy your warm up session with complimentary range balls on our grass driving range tee and world class short game area.



## LOCATION & DISTANCE

**C**hee Chan Golf Resort is located in the Silverlake area. Driving time from Suvarnabhumi Airport is 75 minutes, 30 minutes from Pattaya City, 25 minutes from Pattaya U-Tapao Airport and 20 minutes from Jomtien Beach.






# CHEE CHAN

GOLF RESORT

 **108/18 Moo 6, Na Jomtien, Sattahip,  
Chonburi, Thailand 20250**

 **+66 (0) 3819 6555**  
**+66 (0) 83 148 5555**  
**+66 (0) 65 869 9780**

 **info@cheechangolf.com**

 **www.cheechangolf.com**

 **@cheechangolf**

 **@cheechangolf**

 **chee chan golf resort**